



Key facts about pupil learning, teaching and school management in Kambia District



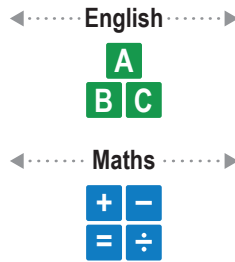
This factsheet is based on findings from the Secondary Grade Learning Assessment (2018).



Fact 1

In Kambia, learning levels of JSS2 and SSS2 pupils are low in both English and Mathematics.

JSS2 pupils that show only up to P6 level skills



SSS2 pupils that show only up to P6 level skills



Amongst JSS2 grade students, average learning levels in Kambia are lower than the national average

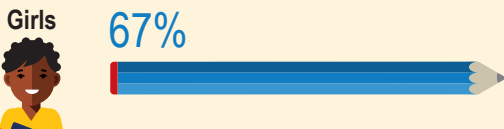
Fact 2

In Kambia, English learning levels of JSS2 girls and boys are similar, but SSS2 girls score lower than SSS2 boys.

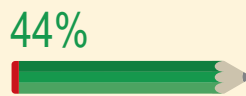
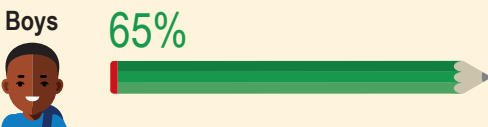
Pupils that show only up to P6 level skills in English

JSS2 pupils 2 or more years behind

SSS2 pupils 5 or more years behind



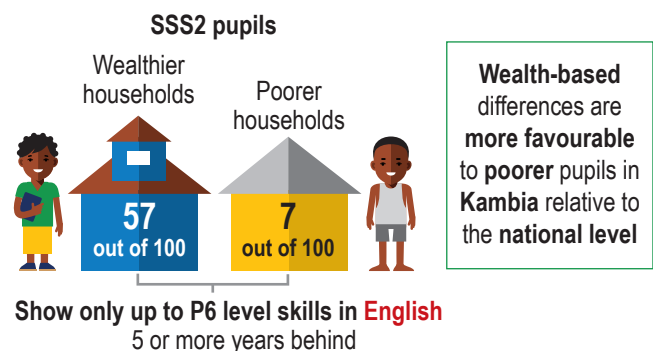
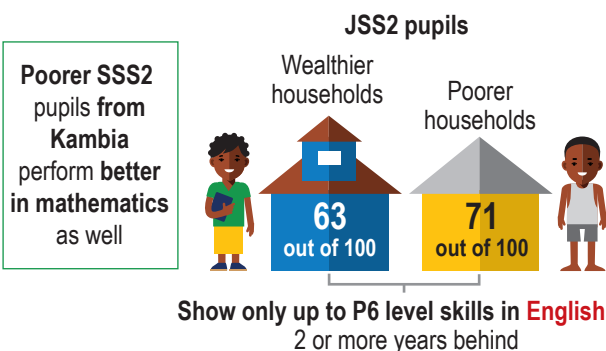
SSS2 girls' skills are more limited to lower grades (P6 or below) than boys



Gender differences in English learning are similar in Kambia and at the national level

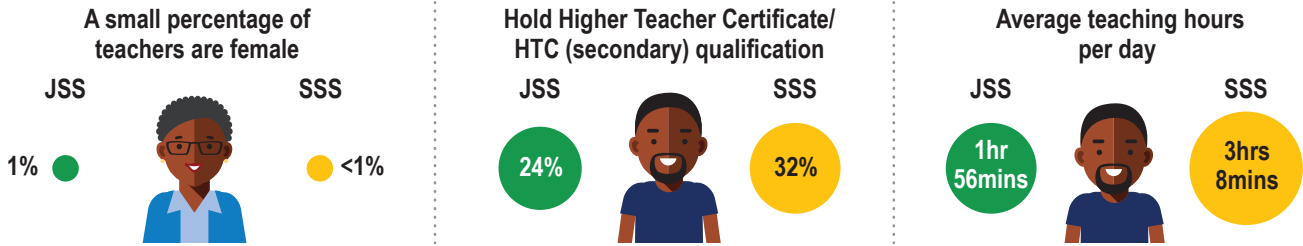
Fact 3

JSS2 pupils from wealthier households perform better than pupils from poorer households in Kambia. However poorer SSS2 pupils score much higher than wealthier SSS2 pupils.



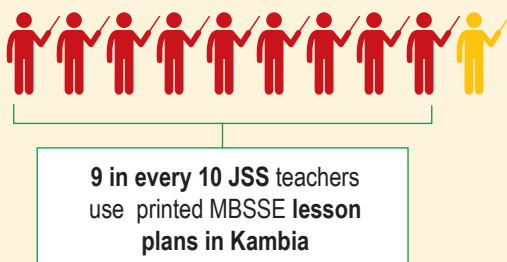
Fact 4

In Kambia, a small percentage of JSS and SSS teachers are female. Most teacher characteristics in Kambia are similar to the **national average statistics**.

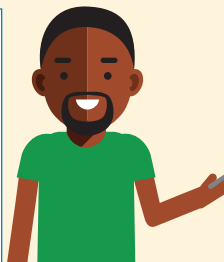


Fact 5

93% of JSS teachers now use printed MBSSE lesson plans in Kambia. However, 53% of these teachers find it difficult to link learning objectives to the appropriate grade level



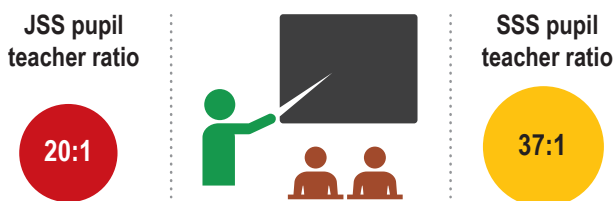
5 out of 10 JSS teachers that use lesson plans in Kambia are unable to link learning objectives to the appropriate grade level



In Kambia, a larger fraction of teachers (5 in 10) make the right links, than at the national level, where only 4 in 10 teachers are able to do so

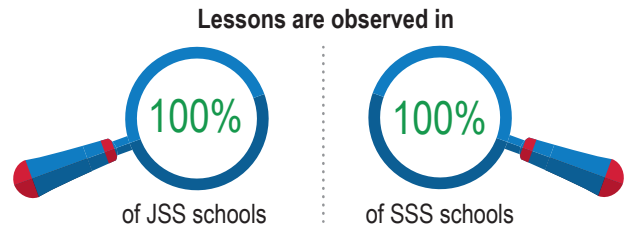
Fact 6

A typical JSS school in Kambia has 20 pupils per teacher. The pupil-teacher ratio is much higher in SSS schools.



Fact 7

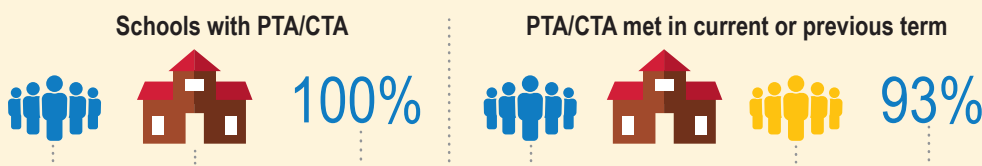
Lesson observations are conducted in every school in Kambia.



PTR ratios and the percentage of lesson observations in Kambia are higher in comparison to the national averages

Fact 8

All schools have parent-teacher or community-teacher associations in Kambia. Most of these bodies are active, having met at-least once in the current or previous term.



The percentage of active PTA/CTA bodies is higher in Kambia than at the national level

Contact details

For more details please contact: **Diana Ofori-Owusu** at +232 76803741

Any views and opinions expressed do not necessarily reflect those of UK Department for International Development (DFID) or the Sierra Leone Ministry of Basic and Senior Secondary Education (MBSSE).